



# HARRISBURG GLOBAL ACADEMY

## *EMPOWERED LEARNING*

We will teach children to become leaders in their communities and create collaborators, communicators, and change makers both locally and globally by empowering children to lead and to learn, ensuring they meet their greatest potential.

# OUR PURPOSE

Harrisburg Global Academy is designed to empower student learning through differentiated instruction and provide all students an opportunity to advance their world language credit acquisition as they matriculate through the program and to earn HS credit by the end of 8th grade.

HGA is a thoughtfully designed K-8 program that utilizes the Workshop Model of instructional delivery wielded to improve learning outcomes for all students by prioritizing small group instruction and support and with an intentional focus on integrating World Language acquisition and cultural appreciation into the elective offerings.

# WHAT MAKES US DIFFERENT?

## WORKSHOP MODEL

- Teachers teach explicit mini-lessons followed by group and individual practice
- Students receive daily small group instruction
- Student academic success will be measured by growth and content mastery

## WORLD LANGUAGE FOCUS

- Elective Spanish language instruction for all students
- Students develop appreciation for the history, culture, art and music for the language

# QUICK FACTS

- HGA is a tuition-free public charter school that will open August 24<sup>th</sup> 2026, to serve grades K-6 and add 7th and 8th grade each subsequent year.
- The School address is 11774 Harrisburg Rd. Indian Land, SC.
- Free bus transportation will be available at designated depot stops. Bus routes will be determined based on the addresses/communities of enrolled students.
- The School will offer tuition-based before and after care through Young Explorers. Program specifics including hours, fees, and registration are available this week on the website.
- Harrisburg Global Academy will participate in the National School Lunch Program and provide free and/or reduced breakfast and lunch for eligible students. Food will be cooked fresh every day.
- Harrisburg Global Academy will be a uniform-required school. Tops/outerwear will be purchased through Land's End and bottoms can be purchased anywhere.

# QUICK FACTS

- HGA has partnered with Lancaster County Sheriff for an SRO on campus.
- HGA plans to be open from 8AM- 3PM.
- Electives for all students include PE, Spanish, STEM, Art and Music
- Class size averages will be 1:22
- The School calendar is for year 1 only, but it is posted on our website. We start 2 weeks later solely to accommodate construction.
- **Teachers will be licensed/certified.**
- Any students who is already identified as Gifted/Talented, has an IEP or 504, or requires related services (Speech) do NOT require new testing.
- In addition to end of year state tests, students will be assessed 3x per year using IReady and/or IXL.
- HGA will offer a variety of accelerated course options for students.

# ACADEMIC PROGRAM

- Harrisburg Global Academy will implement a state-approved core curriculum for English Language Arts (ELA), Math, Social Studies, and Science. The entire curriculum list will be posted under the parent resources page by grade level and subject area.
- Electives for STEM will include Legos/Robotics, Project Lead the Way
- Students will have access to technology, such as Chromebooks, but this is not designed to be a 1:1. We use a variety of tools.
- The School will also offer Honors track for eligible middle school students and gifted/talented classes for eligible students in elementary and middle school. Advanced Spanish, ELA and Math courses will be offered in the middle grades for acceleration and high school credit.

# EXTRACURRICULAR PROGRAM

## **Extracurricular Activities for Students:**

The school will develop a comprehensive after school program that includes competitive sports, and academic and social clubs based on parent and student interest surveys and teacher expertise. Fall sports, clubs, and extracurricular offerings will be advertised in the summer of 2026.

## **Parent Engagement:**

There will be various committees and opportunities for parents to participate in the school community. The School will develop a Parent Teacher Organization prior to opening to ensure parents are engaged, informed and invested in their child's education and the School's long-term success.

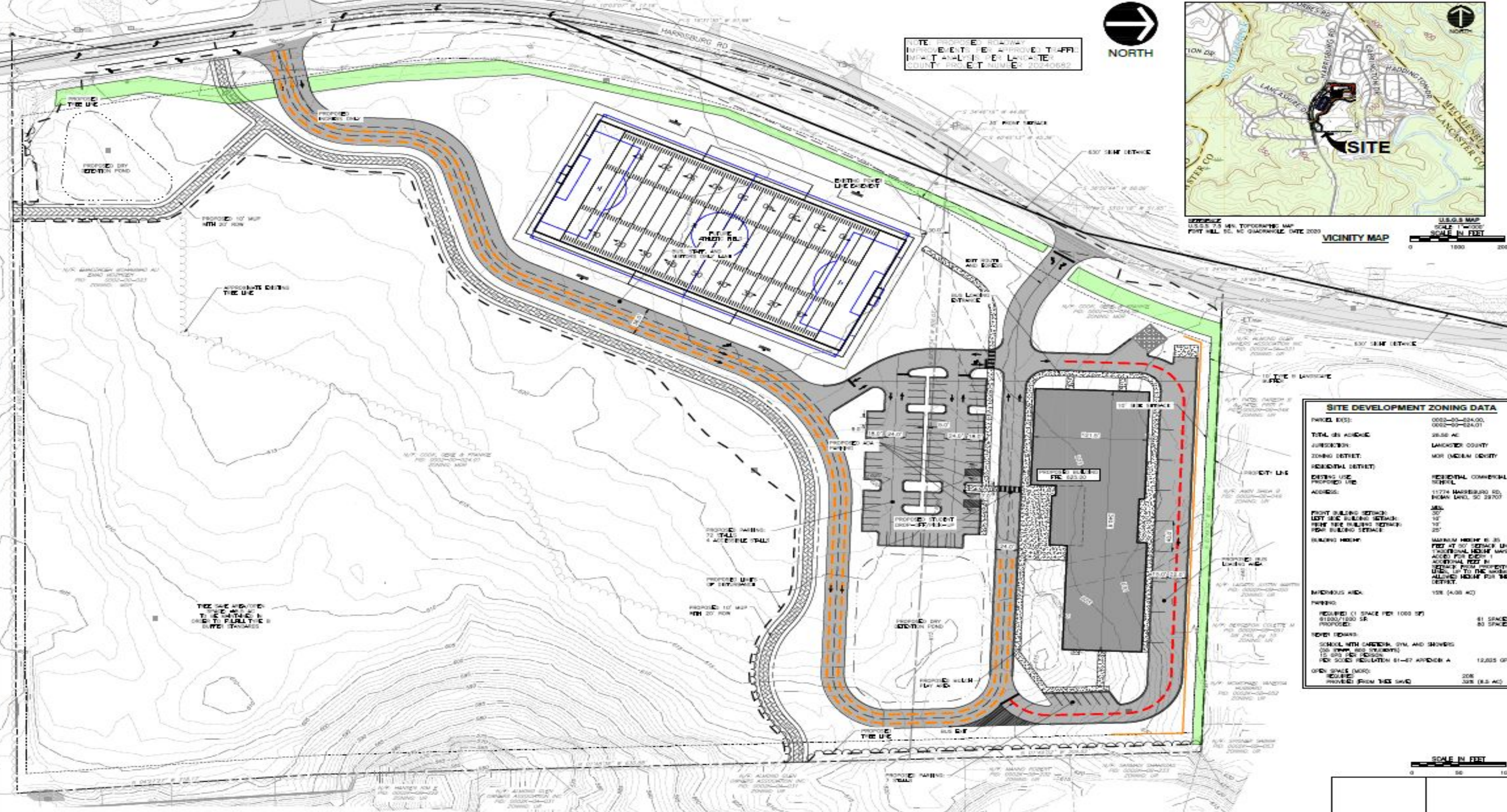
# FACILITY

- Progress photos and construction updates will be shared as they become available. The live webcam is on the website! **Please visit [hgacharter.org](https://hgacharter.org)**
- The school is designed to be a three-story building, housing all classrooms, labs, and a café/gymnasium. Best in Class Turf Athletic complex planned for phase 2.
- There is a K-2 playground adjacent to the building and older students have access to the gym and an outdoor green space for recess and PE.
- The 26-acre site includes a large amount of vehicle queuing to keep traffic off Harrisburg Rd. and provides adequate parking for staff, visitors and school buses.

NOTE: PROPOSED ROADWAY IMPROVEMENTS PER APPROVED TRAFFIC IMPACT ANALYSIS PER LANCASTER COUNTY PROJECT NUMBER 20240682



U.S.G.S. MAP SCALE 1"=1000' SCALE IN FEET  
VICINITY MAP  
U.S.G.S. 7.5 MIN. TOPOGRAPHIC MAP  
PORT HILL, PA. QUADRANGLE DATE 2000



**SITE DEVELOPMENT ZONING DATA**

PARCEL ID(S):	0002-00-024.00, 0002-00-024.01
TOTAL GROSS AREA:	26.56 AC
JURISDICTION:	LANCASTER COUNTY
ZONING DISTRICT:	MOR (MODERN COUNTY)
RESIDENTIAL DISTRICT:	RESIDENTIAL COMMERCIAL GENERAL
EXISTING USE:	PROPOSED USE
ADDRESS:	11774 HARRISBURG RD, HOBAN LAND, 90 28703
FRONT BUILDING SETBACK:	30'
LEFT SIDE BUILDING SETBACK:	10'
REAR SIDE BUILDING SETBACK:	10'
REAR BUILDING SETBACK:	25'
BUILDING HEIGHT:	MAXIMUM HEIGHT IS 35 FEET AT 50' SETBACK LINE. TYPICAL HEIGHT MAY BE ADDED FOR EACH 1' ADDITIONAL FEET IN SETBACK FROM PROPERTY LINE, UP TO THE MAXIMUM ALLOWED HEIGHT FOR THE DISTRICT.
MINIMUMS AREA:	15% (4,000 SQ)
PARKING:	REQUIRED (1 SPACE PER 1,000 SF) 81,000/1,000 SF PROPOSED: 83 SPACES
SEWER TOWNSHIP:	SCHOOL WITH GYMNASIUM, GYM, AND SHOWERS (200 STAFF AND STUDENTS) 15 GPD PER PERSON PER SOLID REGULATIONS 61-67 ARTICLE A 12,000 GPD
OPEN SPACE (MORE REQUIRED FROM THIS SHG):	20% 5,315 (8.5 AC)

SCALE IN FEET  
0 50 100

REFERENCE  
1. SURVEY CONDUCTED BY CIVIL & ENVIRONMENTAL CONSULTANTS, INC. 04/10/2024



